



2025-26 Academic Year

# PARENT HANDBOOK



Safe - Respectful Ambitious



# PRINCIPAL'S WELCOME

Craig Halsall

**"Your children are our focus. The entire team at RBS is dedicated to nurturing each child and their passions, ensuring that they continue to experience the joy of learning. I hope your family will join us on this journey."**

Reach British School is an international school for students aged 3 to 18, offering a high quality, UK based curriculum and education.

Our goal is to ensure that students receive an excellent, engaging and enjoyable education. Whilst we offer a broad and balanced curriculum, we also offer our students opportunities to develop in STEAM and Enterprise. Our enviable facilities, outstanding curriculum and dedicated staff, combine to create a relaxed, yet purposeful learning community. We have a strong academic focus, encouraging our students to be ambitious. We also encourage learning beyond the classroom, with an imaginative extra-curricular programme, where students can take part in many different and rewarding opportunities aimed at expanding their horizons and introducing them to new hobbies and lifelong interests. Above all, at Reach British School we deliver the happy, safe and nurturing environment that students need in order to develop as confident, resilient and rounded individuals, able to thrive in a fast-changing world.

The preparation of our students for the next stage of their educational journey is, of course, our primary focus but we never lose sight of the fact that school years must be enjoyable, exciting and memorable for every student at RBS.

I look forward to welcoming you to our school soon!



# WE ARE PART OF A GLOBAL GROUP OF SCHOOLS

Reach British School is part of **International Schools Partnership (ISP)**.

ISP is a growing group of committed colleagues who are financially responsible schools around the world, all of which aim to be the school of choice in their local area. At ISP learning is at the heart of everything we do for our students, colleagues, and parents. We are committed to getting better, all the time. We are here to help our schools. We want them to get better. The best people to run our schools are the people in our schools. We call our way of working the ISP Framework. Our main role is as critical friends and advisors to our schools.

ISP was founded by an experienced team of committed educationalists and commercial operators who have worked together over many years. Our growing group of private schools located in the USA, Canada, Italy, Spain, Switzerland, the UK, Chile, Colombia, Costa Rica, Ecuador, the United Arab Emirates, Qatar, Malaysia, Mexico, and Peru educates children and students from 2–18 years of age. We have expanded to over 100 schools delivering multiple curricula and building on local brands and reputations with over 80,000 students and 10,000 staff across the globe.

We believe that successful schools are those that put learning at the heart of everything they do, always aiming to create rounded individuals who can forge successful careers and lives in a rapidly changing world. Our goal is to enable our schools to be the leading school of choice in their local area. We are a truly international group working in different cultures and speaking different languages. We work across countries and cultures, too, by working with each other and with other schools and communities.

At ISP we continue to engage with schools around the world that are interested in becoming part of our global group of schools and look forward to welcoming more students and staff to the group.





## Message from the **ISP REGIONAL MANAGING DIRECTOR** Kam Bhamra

On behalf of International Schools Partnership (ISP), I would like to welcome you to Reach British School and our global community.

As part of Reach British School and ISP, you have joined the thousands of families around the world, who have chosen to be part of a community of schools connected by the purpose of growing the world's most curious, confident minds.

### **What this means for our students:**

We believe students should be prepared for a rapidly-changing future world, as technology disrupts the workplace and shapes the skills needed to be successful.

As such, we offer a broad education, which delivers both strong academic success and fosters life competencies such as resilience, collaboration and digital fluency. With this combination, students build their confidence and strengthen relevant skills for the future workplace.

Our Learning.First.™ framework supports our students to be successful now and in the future. We focus on international learning opportunities, with a strong commitment to multilingualism and a spotlight on future university and careers pathways.

### **What this means for our schools and educators:**

At ISP, we invest in our schools, teachers and leaders to ensure they are continuously getting better. Alongside the ongoing inspections carried out by the local education authorities and global accrediting bodies, every ISP school benefits from a data-powered, school evaluation approach that assesses and enhances the quality of learning through focused reflection and action. This process ensures that our schools are always advancing their offering.

### **Partnering with you to shape a better future**

Being an ISP school, your voice matters to us. As the most important partners in your child's learning journey, your insights help us create a better experience for every student in our care. Throughout the school year, you will be invited to share your feedback through regular parent surveys. These are not just checkboxes for us, they are vital opportunities to listen, reflect, and act. Your feedback helps us continually improve the value we bring to your child's education and wellbeing.

Reach British School is proud to be part of ISP, a global community of over 108 schools across 25 countries. While each school is unique, we are all united by a shared purpose: to ignite student curiosity and grow their self-confidence so they can shape a better world. By sharing your experiences and suggestions, you directly support this purpose - helping us nurture confident, curious, and capable learners who thrive not only in school, but far beyond it.

Welcome to ISP. Where confidence grows.



**Hala Al Qubaj**

Admissions  
Manager



**Nadia Orgill-Low**

Head of  
Primary



**Adam Crossley**

Head of  
Secondary



**Craig Halsall**

Principal



**Andrew Du Lieu**

Vice Principal



**Manal Jallad**

Head of MOE -  
Primary



**Layla Keylani**

Finance and  
Administration  
Manager



## meet the CLT

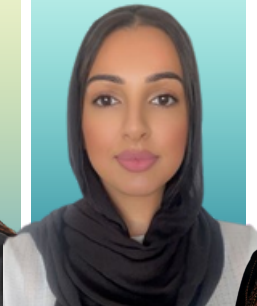
**Sherley Louis**

Head of Inclusion



**Sophia Hussain**

Deputy Head  
of Primary -  
Pastoral



**Marilyn Cassell**

Deputy Head  
of EYFS



**Anna Cavanagh**

Deputy Head of  
Secondary  
Teaching & Learning



**Kerry Walsh**

Deputy Head of  
Secondary  
Pastoral



**Steven Roger**

Deputy Head of  
Secondary  
Academic



## meet the ELT





# AMAZING LEARNING

is central to everything we do



# TABLE OF CONTENTS

<b>01</b>	<a href="#"><u>SCHOOL DAY</u></a>
<b>02</b>	<a href="#"><u>ENRICHMENT</u></a>
<b>03</b>	<a href="#"><u>PLAYTIME AND LUNCH ARRANGEMENTS</u></a>
<b>04</b>	<a href="#"><u>TEACHERS AND CLASSES</u></a>
<b>05</b>	<a href="#"><u>TEACHING AND LEARNING</u></a>
<b>06</b>	<a href="#"><u>CENTURY AI</u></a>
<b>07</b>	<a href="#"><u>CURRICULUM OVERVIEW</u></a>
<b>11</b>	<a href="#"><u>SAFEGUARDING</u></a>
<b>12</b>	<a href="#"><u>ATTENDANCE</u></a>
<b>13</b>	<a href="#"><u>BEHAVIOUR</u></a>
<b>14</b>	<a href="#"><u>REPORTING ABSENTEEISM</u></a>
<b>15</b>	<a href="#"><u>HOW TO REQUEST YOUR CHILD TO LEAVE EARLY</u></a>
<b>16</b>	<a href="#"><u>HOMEWORK</u></a>
<b>17</b>	<a href="#"><u>COPY BOOKS &amp; TEXT BOOKS</u></a>
<b>18</b>	<a href="#"><u>COMMUNICATION</u></a>
<b>19</b>	<a href="#"><u>HOUSE SYSTEM</u></a>
<b>20</b>	<a href="#"><u>SCHOOL CLINIC AND NURSES</u></a>
<b>21</b>	<a href="#"><u>TRANSPORTATION</u></a>
<b>22</b>	<a href="#"><u>TERM DATES</u></a>
<b>23</b>	<a href="#"><u>UNIFORM AND BAGS</u></a>
<b>24</b>	<a href="#"><u>MAKEUP, CHEWING GUMS AND MOBILE PHONES</u></a>
<b>25</b>	<a href="#"><u>IMPORTANT CONTACT NUMBERS</u></a>
<b>26</b>	<a href="#"><u>PARENT ADVISORY BOARD</u></a>
<b>27</b>	<a href="#"><u>SOCIAL MEDIA</u></a>

# SCHOOL DAY

## EYFS

### Mondays - Thursdays

7.00am - staff to arrive by 7am  
7.05am - Gates open  
7.05am - 7.30am: Children arrive in class  
7.30am - 12.45pm: Lesson time  
12.45pm - 1.15pm: Safeguarding

### Fridays

7.00am - staff to arrive by 7am  
7.05am - Gates open  
7.05am - 7.30am: Radio / outdoor registration /  
National anthem  
7.30am - 11.30am: Lesson time  
11.30am - 12.15pm: Safeguarding

## Primary

### Mondays - Thursdays

7.00am - staff to arrive by 7am  
7.05am - Gates open  
7.05am - 7.30am: Radio / outdoor registration /  
National anthem  
7.30am - 9.30am: Lesson time  
9.30am - 10.10am: BREAK 1  
10.10am - 12.10pm: Lesson time  
12.10pm - 1.10pm: BREAK 2  
1.10pm - 2.50pm: Lesson time  
2.50pm - 3.05pm: Safeguarding

### Fridays

7.00am - Staff to arrive by 7am  
7.05am - Gates open  
7.05am - 7.30am: Radio / outdoor registration /  
National anthem  
7.30am - 7.40am: Registration  
7.40am - 10.00am: Lesson time  
09.30am - 10.10am: BREAK  
10.20am - Noon: Lesson time  
12.00pm - 12.15pm: Safeguarding

## Secondary

### Mondays - Thursdays

7.00am - staff to arrive by 7am  
7.05am - Gates open  
7.05am - 7.30am: Radio / outdoor registration /  
National anthem  
7.30am - 7.40am: Form tutor time  
7.40am - 10.20am: Lesson time  
10.20pm - 10.40am: BREAK 1  
10.40am - 1.20pm: Lesson time  
1.20pm - 1.50pm: BREAK 2  
1.50pm - 2.50pm: Lesson time  
2.50pm - 3.05pm: Safeguarding

### Fridays

7.00am - staff to arrive by 7am  
7.05am - Gates open  
7.05am - 7.30am: Radio / outdoor  
registration / National anthem  
7.30am - 7.40am: Registration  
7.40am - 10.20am: Lesson time  
10.20am - 10.40am: BREAK  
10.40am - Noon: Lesson time  
12.00pm - 12.15pm: Safeguarding



# ENRICHMENT

As parents will be aware, we listened to parents' concerns regarding the accessibility and cost of ECAs. We, therefore, moved all ECAs, rebranded as 'enrichment', to during the school day so that all students can access two enrichment activities per week without additional cost (Year 1 – 9) or have extended curriculum time (Year 10 – 13).\*

Each student's encouragement and enjoyment are at the heart of all our enrichment programmes. The passion and encouragement from our staff make the enrichment activities worthwhile and fulfilling for the students. Students can choose from a wide selection of extra-curricular activities such as:

Drawing & Arts | Cooking | Robotics | Enterprise | Football | Swimming | Lego Animation | STEAM | Drama Club | Coding | Basketball | Dance | Debate Club | Book Club | EA Sports Rounders | Maths: One to One | Environmental | International Award | Arabic Creative Club | Arabic Reading | Social Studies | Quran Recitation and many more.

*\*Any enrichment costs will be restricted to covering additional costs associated with the activity e.g. A cooking enrichment activity will likely require some additional cost to cover ingredients.*



# PLAYTIME AND LUNCH ARRANGEMENTS

We follow a roster during playtime and lunchtime, so fewer children are in the playground at any one time. This ensures that the oldest and youngest children are not in the playground together.

Foundation Stage has their own play and lunch time, taking place in dedicated play areas. Those will be shared with parents before the start of the academic year.

The playground is the main area where children can play together, join in an organised game, or sit and eat. Outdoor PE lessons have also been time tabled so that they do not clash with break times.



# TEACHERS AND CLASSES

The aim of every lesson is to help all children make the best possible progress in their learning. To do this, we must always look at which children are in each class so that teachers can give the right amount of time to every individual child.

As a British school, teaching English, we also make sure children's language abilities are taken into account so that their spoken and written English can also improve.

In Primary, it is important classes have the right mix of children who can learn together and in smaller groups within the class. For this reason, we have looked carefully across every class from the Early Years (FS1 - FS2) to Primary Years (Year 1 - Year 6) and have made adjustments to ensure all classes have a balance of students.

In Secondary, our teachers are all experienced in delivering learning which aligns with the highest standards expected by the British curriculum and in each subject delivered, teachers are specialists in their subject areas. In Years 7-9, all classes are of mixed academic ability with streaming and course-specific pathways introduced from the start of the IGCSE courses in Year 10. Due to the highly specialised nature of A-Level and BTEC, class sizes tend to be in region of 10-15 students for these courses allowing for even further personalisation of learning at the end of their educational journey.



# TEACHING AND LEARNING

We have a mantra at Reach British School and ISP and that is, that Amazing Learning comes first.

A major element of our approach to learning and teaching are seven key criteria, the RBS Way. These criteria are essential in lessons. They are Challenge, Pace Management, Data, Questioning, Facilitated Learning, Technology, and EAL (English as an Additional Language). These criteria have been carefully selected to ensure that every lesson delivers an exceptional S experience, catering to the diverse needs of the students and in essence your child.

The outstanding education of students and your child is driven by a whole school approach of everyone getting better. This is driven by specific Deputy Heads who operate across the whole school. Their remit is to ensure that the criteria mentioned earlier, the RBS Way, is applied consistently and robustly in every lesson, every day, every term.

These dedicated staff provide a wealth of practical examples and insights, giving teachers at Reach British School a clear roadmap for implementing outstanding learning effectively in classrooms. We emphasise the importance of creating dynamic and enriching learning environments that foster student engagement and holistic development.

Learning comes first and we have a structure at RBS to ensure that our teaching is equipped to ensure that this happens. The school has an unwavering commitment to excellence in education and the development of your child and ensuring that they are well-prepared for future success and happiness.



Reach British School is proud to offer Century AI to all students from Years 2 to 12. CENTURY AI has been developed by an award-winning team of experienced teachers, neuroscientists and technologists. Together, they have combined the latest research in learning science, artificial intelligence and neuroscience to ensure CENTURY is underpinned by evidence-based scientific and pedagogical techniques.

Century AI has a proven track record of improving CAT scores, SATs, GCSEs and across international curricula. It offers a comprehensive and bespoke English, maths and science curriculum through its AI engine ensuring that all students are practising on their unique levels while optimising engagement and setting ambitious standards for achievement.

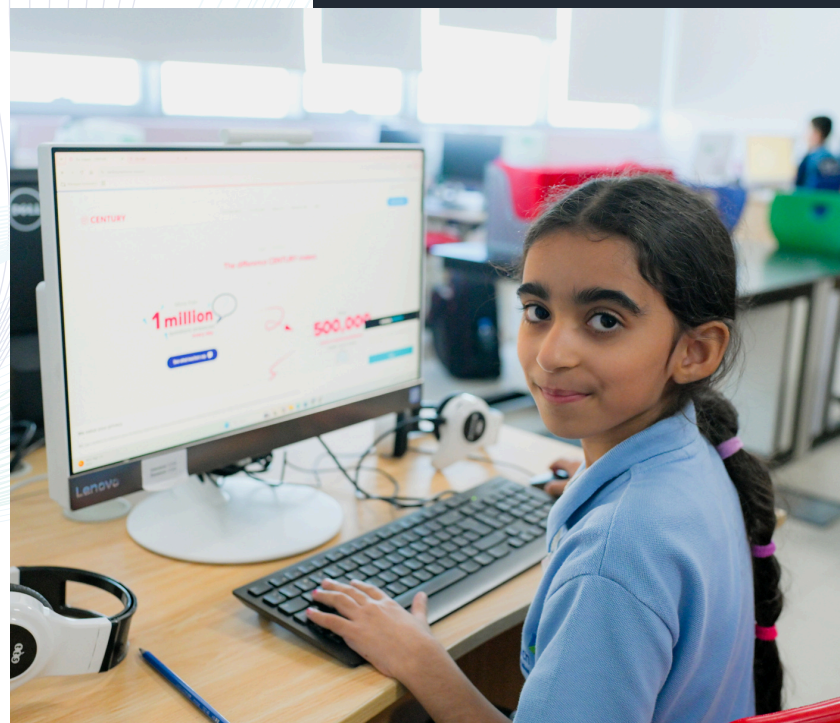
Last year, Reach British School started with Century teacher training till mid October and fully launched after the midterm break (23rd October). We are currently in our third phase of implementation:

- \* Phase 1: Establish a steady rate of student engagement across the year groups and subjects and incorporate Century for in class and at home usage.
- \* Phase 2: Ensure equity in terms of usage across the core subjects.
- \* Phase 3: Comprehensive and consistent usage of diagnostic tests before and after the delivery of a unit of study to track progress, attainment and quality of teaching & learning.

Over the month of June, the school has seen a continuation of our ambitious usage and impact using Century AI. Students completed on average 19 nuggets, a further increase of 16% cumulatively over the month. The total number of nuggets completed grew with 21,728 and questions saw an increase of 178,222, both forms averaging out to an increase of 16%. Diagnostics grew extensively to an increase of 20% with 1,940 completed in the month of June. Teacher set assignments increased by 247, an increase of 13% compared to the prior month. When we compare the month of May to June, we see that students completed 2.3 additional nuggets on average and 2,558 additional nuggets across the school. Our biggest gain was in completed diagnostics which saw an increase of 9240 compared to May, an increase of over 90%.

These numbers are a reflection of our continued drive towards our implementation where teachers assign diagnostics before and at the end of each unit to track progress and gain a better understanding of attainment as well as intervention needs.

# CENTURY AI





# CURRICULUM OVERVIEW



## Early Years Foundation Stage

Our Early Years Foundation Stage (EYFS) curriculum is designed to provide a bi-lingual, thematic immersive experience that is child centred and engages the students to develop as individuals.

The Prime areas of learning are:

- Personal, Social, and Emotional Development: Encouraging children to develop confidence, self-awareness, and social skills through cooperative play and guided activities.
- Communication and Language: Enhancing listening, speaking, and understanding skills through storytelling, discussions, and interactive games.
- Physical Development: Promoting fine and gross motor skills through outdoor play, sports, and creative activities like drawing and building.

Specific areas include:

- Literacy: Introducing children to the world of reading and writing with a focus on phonics, storytelling, and early writing exercises.
- Mathematics: Developing early numeracy skills through practical activities involving counting, sorting, measuring, and problem-solving.
- Understanding the World: Expanding knowledge and curiosity about the world around us through exploration, experiments, and themed projects.
- Expressive Arts and Design: Fostering creativity and imagination through art, music, dance, and role-play. Our approach is centred on play-based learning, where children learn best in a fun and engaging environment.



## Primary

Our strong and engaging curriculum has been carefully adapted to meet the needs of our students. They initially develop their understanding of the UAE context before facilitating their exposure to the UK and the wider world. This allows our students to compare diverse cultures and places.

A STEAM focus and reading at the heart of our cross-curricular units allows our students to take a carefully mapped out journey, developing their knowledge and skills so that they can apply their learning in different contexts.

Whether their individual pathway is that of a "Reading Detective", "Mathematician", "Super Scientist", "Code Breaker", "Eccentric Engineer", "History Detective", "Amazing Artist", "Little Chef" or an "Active Athlete", our curriculum is packed with immersive and interesting experiences for each and every child to develop a love and confidence in learning.

Our curriculum is further enhanced with bespoke educational visits that support our students' learning throughout the year. Our STEAM-focused enrichment program ensures every child has the opportunity to choose activities they want to engage in twice a week!

Being part of our community means that our students grow into responsible young adults who are well supported to ensure their future is within Reach!





## Secondary

We offer a broad and balanced curriculum that meets each student's academic and social developmental needs through the National Curriculum of England. Students explore a range of subjects in Key Stage 3 and develop a keen sense of their interests before opting for an ambitious IGCSE course load in year 10. After graduating with an IGCSE certificate, student will continue their studies with our broad range of AS and A Level courses.

Throughout their learning journey, students are encouraged to show responsibility for their learning, develop self-awareness and engage with methodologies to enhance their progress. We aim to build our students into the leaders of the future holistically!

### Sixth Form Pathways

At Reach we offer three future pathway options for students. Each of these provides a route to university, catering to the individual strengths of each child.

- **A level pathway** - Students are advised to take four A-level subjects in Year 12.
- **BTEC pathway** - Students will take either BTEC Level 3 International Diploma in Enterprise or Applied Science plus additional courses to support Maths and English skills.
- **Hybrid pathway** - Students will take two A-level subjects and one BTEC Level 3 International Diploma (the equivalent of two A-levels - UCAS)

### What is BTEC

At Reach, we are now offering BTEC courses which focus on practical, skills-based learning. Within our BTEC programme, we provide options such as the **BTEC International Level 2 Diploma in Sports, Art and Design and Digital, and Level 3 Diplomas in Enterprise and Applied Science**. BTEC courses are ideal for students with a strong passion for a specific career or industry. These courses are also great for students who excel through continuous assessment rather than high-pressure exams. Typically, BTEC courses consist of 18 modules, where students showcase their skills through coursework submissions.

BTEC qualifications, which originated in the UK, are recognised for their vocational focus and are offered by the Pearson Edexcel Exam Board.





# SAFEGUARDING

All members of staff in school have a duty of care towards their students and are responsible for their wellbeing, safety, and protection whilst they are under the school's supervision. This includes travelling to and from the School using School-provided transportation means, and while moving between all activities organised by the School.

## Designated Safeguarding Leads:

- Mr. Craig Halsall, *Principal*
- Mr. Andrew Du Lieu, *Vice Principal*
- Mr. Adam Crossley, *Head of Secondary*
- Ms. Nadia Orgill, *Head of Primary*
- Ms. Marilyn Cassell, *Head of EYFS*
- Ms. Sophia Hussain, *Deputy Head - Pastoral (Primary)*
- Ms. Kerry Walsh, *Deputy Head - Pastoral (Secondary)*

## Designated Deputy Safeguarding Leads:

- Mr. Joseph Clark, *Assistant Head - Pastoral (Primary)*
- Ms. Nouf Alameri, *Social Worker - Secondary*
- Ms. Hanan Zaifa, *Social Worker - Primary 1*





# ATTENDANCE

At Reach British School, we know that excellent attendance and punctuality impact and direct impact on student academic achievement, wellbeing, and wider development, accessing a holistic curriculum.

‘There is evidence to suggest that regular school attendance is a key mechanism to support children and young people's educational, economic and social outcomes.’ Gov.uk

It is the collective responsibility of staff, parents and students to ensure that students achieve and maintain excellent attendance!

OTIS (On Time in School) is our attendance bear, which is awarded to the classes that have the best attendance over the course of a week. It is a real honour to have OTIS spend the day in your classroom. At the end of each term, students who have 100% attendance receive a certificate recognising their achievement.

- Morning registration takes place on the playground between 07:10 and 07:27
- After 07:25 late students are registered at Gate 20
- After 07:30 late students register directly in the school reception
- Late ‘Bus Students’ will be issued with a ‘late bus student slip’, they will not be marked late



# BEHAVIOUR

Reach British School is a welcoming and happy place where we believe that all members of our school community must show respect and exercise consideration towards each other. Every student has the right to feel safe, respected and have the opportunity to be ambitious with their learning, and every teacher has the right to feel safe in a cooperative school atmosphere.

Linked with our house system, we are building a culture of rewards and role modelling best behaviour. We do not sanction by using detentions or punishments; In line with enhancing students' life competences, we adopt a restorative approach to the child's behaviour and encourage vital 'learning about self' as part of this.

We have high expectations of everyone in our community and we will not compromise on this. All teachers will use their judgement, calmly and fairly and to support students to be the best they can be. We will ensure that positive behaviour is rewarded; inappropriate behaviour is dealt with firmly and fairly, with the intended outcome being that the student learns how to make correct choices. We recognise the importance of working with parents and carers to support our students.

We expect all our school community to represent the school on public occasions and promote a positive school image by advocating and acting as ambassadors.



# REPORTING ABSENTEEISM

## Sickness

Whilst we understand that sickness is inevitable, we ask that parents make every effort to ensure all non-urgent medical appointments are made outside school hours. Where it cannot be avoided, students should attend school for as much of that day as possible.

Parents should inform school by emailing [absence@reachbritishschool.com](mailto:absence@reachbritishschool.com) as soon as they know their child is going to be absent from school and attach any medical certification explaining prolonged absence. If medical certificates are not provided on request it may result in the absence continuing to be classed as unauthorised.

## Requests for leave

If you know in advance that your child will be absent, please complete the Absence Form found at reception. This will be reviewed and you will then receive notification whether the absence has been authorised or is unauthorised.

The communication will outline the details of when the child is expected to return to school. Parents should contact the school immediately if there will be a cause for delay from the stated date of return.

# HOW TO REQUEST YOUR CHILD TO LEAVE EARLY

## Early pick up

We ask that if students are going to be picked up early that parents inform the school via email [absence@reachbritishschool.com](mailto:absence@reachbritishschool.com) before 10:00am on the same day. Parents must park outside Gate 1 and then report to the reception to collect their child.

Parents wanting to collect their child from school that ordinarily uses the school bus must contact the school receptionist and transportation department in writing before 10:00am on the same day. The classroom teacher will then be informed by the receptionist. Please note that no exceptions to this rule will be allowed under any circumstances. This is to prevent communication errors and ensure the safety of our students.

Absence: [absence@reachbritishschool.com](mailto:absence@reachbritishschool.com)

Reception: [reception@reachbritishschool.com](mailto:reception@reachbritishschool.com)

School Transport: [transportation@reachbritishschool.com](mailto:transportation@reachbritishschool.com)





# HOMEWORK

In the Foundation Stage classes, there is no English homework for students. In Arabic, there are enrichment activities sent home at the end of each week including letter formation and matching. FS2 students get some reading practice sent home when they are ready.

In Primary School, from Year 1 to Year 6, each week students will receive at least one piece of Maths, English, and Science homework. There are also weekly spelling tests.

Arabic and Islamic homework are shared throughout the weekly plans on Class Dojo or Google Classroom. Homework will be given out to be returned as per the teachers' instructions.

Some educational applications are assigned to students to do at home such as ReadingEggs, Education City, Cracking Comprehension, Nahla Wa Nahel, and Century AI from Year 3 onwards.

Students move into Secondary School and start to prepare for formal external examinations, which include the revision that will get them through these exams. In Key Stage 3: Year 7 to Year 9 will receive up to 90 minutes of homework per day. In Key Stage 4: Years 10 and 11 will receive up to 120 minutes per day, as well as revising the class notes.



# COPY BOOKS & TEXT BOOKS

There are no copy books to be taken home in the Foundation Stage.

In Primary School, copybooks are taken home when homework is given to the student and are to be returned upon teachers' request.

In Secondary School, parents should note that copy books and Google classroom are the students' main revision tools when it comes to exams. Therefore, it is of utmost importance that they submit every task assigned to them and take comprehensive notes in class that will be of value to them when revising.





# COMMUNICATION

Reach British School values the important contribution families make to a child's school life. We see your engagement as an integral part of your child's success.

Channel	What	When
Class Dojo	Main communication channel for the school to keep teachers, families, and kids connected. It contains classroom stories, important school news and updates. A tool of communication to communicate with your child's teacher.	Classroom stories Important school Updates and letters
Newsletter	Stay connected with school events through the newsletter featuring updates from the principal, student achievements, and community stories.	It will be sent weekly through Class Dojo and email every Friday at 11 am.
iSAMS	A comprehensive school management system replacing Engage.	iSams, a new system launching in November 2024, enables receiving school communications, booking teacher appointments, submitting forms, reporting child absences, vaccinations, and more.
Email	Please reach out via email for questions, ideas, or issues, using specific addresses for each need to ensure you receive the best assistance.	For general inquiries and suggestions; parents can email the school at: <a href="mailto:info@reachbritishschool.com">info@reachbritishschool.com</a> For parents concerns, please email us at: <a href="mailto:communication@reachbritishschool.com">communication@reachbritishschool.com</a>
Social Media	Social media is used to showcase diverse learning experiences and celebrate student achievements within the school community.	We are regularly updating our social media accounts. Follow us in <a href="#">Facebook</a> , <a href="#">Instagram</a> and <a href="#">Tiktok</a> .



Our house system is at the heart of our school, its drivers and its stakeholders. Its mission is to foster a sense of belonging within a healthy and competitive framework and develop a coherent and collaborative school that exudes house spirit and encourages self-development within a supportive community. The house system acts as a link between the different age groups in the school, providing them with opportunities for working and competing together. The benefits of such a system are:

- Leadership opportunities for students.
- Creating a support system across year groups.
- Develop self-confidence and self-esteem.
- Developing resilience, independence, helping students make responsible choices and increasing their ability to collaborate with others.
- To prepare learners at the school for the opportunities, responsibilities and experiences of life after school (life competencies).
- Develop good relationships with other members of the school and the wider community.
- Equality of opportunity, encouraging students to realise an individual's full potential.

The house system encourages student engagement and collaboration in various events held throughout the year, recognizing different levels of participation. These take on a variety of forms such as academic, athletic, community and sustainability events.

## HOUSE SYSTEM





# SCHOOL CLINIC AND NURSES

Reach British School has a Health Clinic led by full-time qualified School Nurses, to ensure the health and safety of all our students in school are met. This is in conjunction with the Health Authority of Abu Dhabi (HAAD) regulations.

The clinic in school is equipped to deal with all minor and initial emergency concerns that may occur in school.

The clinic and nurses are fully compliant with all HAAD requirements and use evidence-based healthcare practices.

The clinic is officially licensed by HAAD and regularly inspected by both ADEK and HAAD.

The contact details of the nurse are :

Landline: 025822030

Primary clinic: Ext. 207

FS clinic: Ext. 222



# TRANSPORTATION

We do everything we can to help parents get children to and from school.

This is a very serious task and requires the safety of all our students as they travel. They, therefore, must wear their seatbelt at all times and behave so that the students, staff and driver on board are not distracted.

We offer comprehensive coverage of all the essential areas for your children's commute.

Currently, our school is using the Salama Application to monitor students' bus trips to and from school in real time to ensure their safety. Here are some features of this app:

- allows parents to monitor students' bus trips to and from school in real time to ensure their safety.
- enables parents to directly communicate with bus supervisors and operators.
- available to all students in private and charter schools in Abu Dhabi, during its first stage.
- operates on Android and iOS smart mobile phones.

To know more about SALAMA Application, please click the link below:  
<https://admobility.gov.ae/en/school-transport>

If you have any questions or would like to contact the Emirates Transportation (ET) team please see the details below:

ET Representative: Mr. Kamel  
Mob: +971 50 749 9027  
Telephone: +971 2 5822030 ext. 215  
Email: [transportation@reachbritishschool.com](mailto:transportation@reachbritishschool.com)





# TERM DATES

Date	Event
<b>Term 1</b>	
Monday, 25 August 2025	Meet the Teacher Day
Monday, 13 October – Friday, 17 October 2025	Half term break for students and staff
Friday, 8 December 2025	Last Day of Term 1
<b>Term 2</b>	
Monday, 5 January 2026	Term begins for all students (FS1-Year 13)
Thursday, 19 February – Friday, 20 February 2026	Half-term break for students and staff
Friday, 13 March 2026 (To be confirmed)	Last Day of Term 2
<b>Term 3</b>	
Monday, 30 March 2026 (To be confirmed)	Term begins for all students (FS1-Year 13)
Friday, 3 July 2026	Last Day of Term 3

## UNIFORM AND BAGS

Students are expected to wear the school uniform including shoes every day. They may only wear kandura, abaya, or other non-uniform clothes when given special permission.

We recommend bags with two shoulder straps that can be safely kept in corridors outside the classrooms.

The Uniform Shop is located in the administration corridor at Reach British School. The payment methods can be cash or credit/debit card.

For general enquiries, please contact Trutex at [REACH@trutex.com](mailto:REACH@trutex.com) or call them at +971 056 800 5047.



# MOBILE PHONES, MAKE-UP AND CHEWING GUM

## Mobile Phones

Phones are not to be used in school. Taking photographs or videos of any child or school activity is strictly prohibited. They are also a distraction to learning and a potential danger to child safety.

Mobiles phones will be strictly prohibited from September 2024.

If any student is seen using a phone inside the school, there will be a three rule policy in place, including:

- a first warning
- confiscation by the Head of School until the end of the day
- confiscation given to the principal for the parent only to come and collect

## Make-up & Chewing Gum

Students are not allowed to wear make-up unless with special permission also. Also, chewing gum is not allowed on buses or in the school playground or buildings.

## IMPORTANT CONTACT NUMBERS

Department	Contact Person	Extension No.	Email
Reception - Admin Building	Ms. Houriya	200	reception@reachbritishschool.com
Reception - EYFS		300	
Student illness/arriving late/leaving early	Ms. Mona	400	mdemesa@reachbritishschool.com
Accounts payable	Ms. Remedios	214	rreyes@reachbritishschool.com
Finance	Mr. Mohamed	204	finance@reachbritishschool.com
Procurement and Stores	Ms. Faryal	212	farbab@reachbritishschool.com
Parent Relation Executive	Ms. Ruba	231	rjaber@reachbritishschool.com
Admissions	Ms. Amal	251	aabdelhadi@reachbritishschool.com
	Ms. Lyra	206	ltigaronita@reachbritishschool.com
Uniform	Ms. Marilyn		reach@trutex.com
Transportation	Mr. Kamel	215	transportation@reachbritishschool.com
Premises	Mr. Sahilan	220	facilities@reachbritishschool.com
Clinic	Primary/Secondary	207	nurses@reachbritishschool.com
	FS	222	





# PARENT ADVISORY

We are always keen to welcome families into our school – your support and time are much appreciated. Activities you may support include artwork, individual reading, group comprehension, school visits or even ICT.

If you could offer a regular time each week to come and support in school or if you would like to support on a less regular basis, or even attend a school trip, we would be delighted to have your help.

As part of our duty of care, all adults in school must have received some training and advice regarding child protection and safeguarding. If you would like to help in school, you will be invited to a training session early in the school year. Following the training, you are free to arrange times to come and support in school directly with your class teacher.

We have a dedicated group of wonderful parents who assist us with the events throughout the year. If you are interested in joining them, please contact [communication@reachbritishschool.com](mailto:communication@reachbritishschool.com)





REACH

## SOCIAL MEDIA

Please follow us on Facebook and Instagram to keep up to date with what's happening.



[RBS.AD](#)



[reachbritishschool](#)



[reachbritishschool](#)